



**IQSIGHT**

## COMPANY OVERVIEW

VISUAL INTELLIGENCE FOR A WORLD UNINTERRUPTED

# THE WORLD MOVES FAST. SECURITY MOVES FASTER.

Customers need intelligence they can trust.

IQSIGHT delivers accurate insights that help teams act quickly and confidently, building on a proven heritage to address evolving security challenges.

## VISUAL INTELLIGENCE FOR A WORLD UNINTERRUPTED

**The world moves fast.**

Organizations need continuous visibility and the ability to respond without delay.

Yet fragmented tools and noisy data often make it harder to see clearly and act in time.

**Security must move faster.**

# INNOVATION ANCHORED IN TRUST

THE FOUNDATION REMAINS. INTELLIGENCE ACCELERATES.



**Built on Decades of  
Engineering Excellence**



**Powered by Intelligence**



**Uncompromising Standards**

# WHO WE ARE

TRUSTED  
WORLDWIDE.  
BUILT FOR WHAT  
MATTERS.

Delivering clarity and  
reliable performance in  
environments where every  
second counts.

**800+**  
Employees

**600+**  
Patents

**32**  
Locations

**60+**  
Years of Trust

**19**  
Countries

**6**  
Global R&D facilities

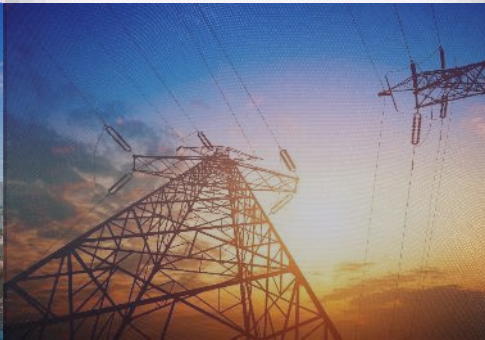
# WHO WE SERVE

SMART CITIES



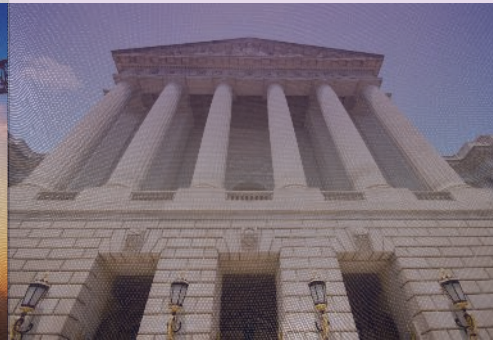
(PUBLIC SPACES, CITY MONITORING)

UTILITIES/ENERGY



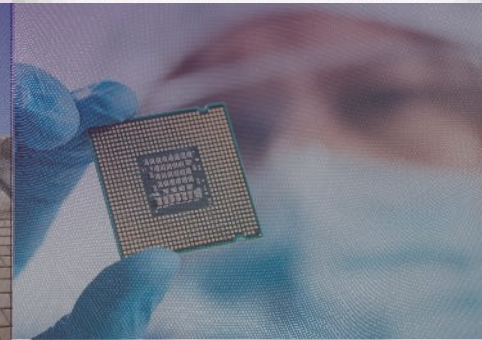
(POWER, SUBSTATIONS)

GOVERNMENT



(PUBLIC SAFETY, CIVIC SITES)

DATA CENTERS



(ENTERPRISE, CLOUD, EDGE SITES)

TRANSPORTATION



(AIRPORT, METRO, HIGHWAYS)

# WHERE WE SERVE



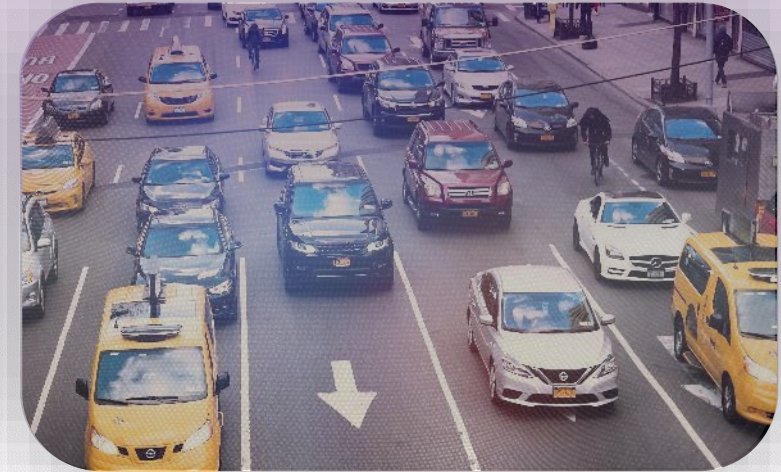
## BUILDING SECURITY

- Government and commercial buildings
- School campuses
- High-risk facilities



## PERIMETER SECURITY

- Energy and utility sites
- Airport and railways
- Governmental facilities

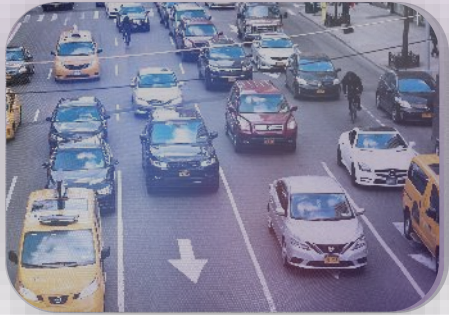


## SMART CITY TRAFFIC

- Urban traffic monitoring
- Intelligent Transportation Systems
- City surveillance

# WHAT WE DO, WHY WE'RE DIFFERENT

Our focus is to deliver **intelligence-first security**, based on decades of engineering expertise to help organizations see clearly, understand context in real time, and act with confidence.



## Industry-leading video intelligence

- Drives action, not analysis.
- Edge AI with 95%+ accuracy. No calibration for most use cases.
- GenAI-powered reasoning on edge and in the cloud.



## Engineered to perform

- Proven imaging. Dependable hardware. 24/7 awareness.
- Starlight X + HDR X for low light and clarity.
- Built for extremes. IK10+, IP68. Reliable in any environment.



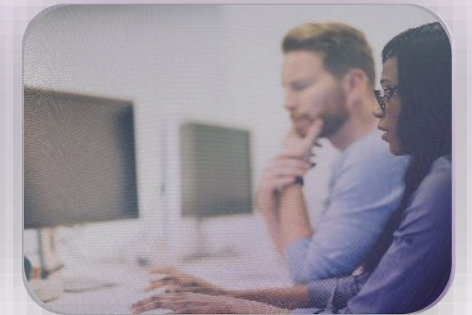
## Secure by design

- Cyber-resilient from capture to delivery.
- Built-in Secure Element.
- Aligned to global standards.
- UL 2900-2-3 L3, IEC 62443, FIPS 140-3.



## Simple from installation to operation

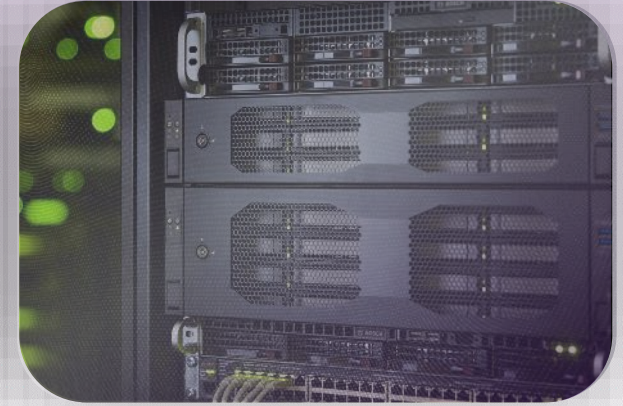
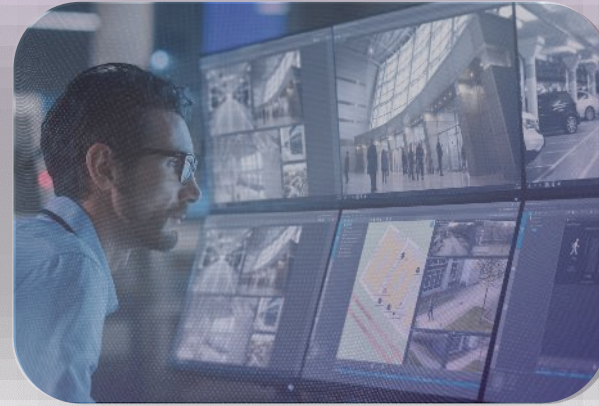
- Fast to install. Easy to configure.
- Remote cloud setup. Minimal business disruption.
- Open architecture. ONVIF compliant. Genetec + Milestone ready.



## Built to support you

- Simple tools. Fast onboarding.
- Local training (virtual + in-person) in your language.
- Certification helps teams resolve issues independently, with rapid support when it matters.

# DISCOVER OUR PRODUCTS



## See clearly. Understand more.

- Intelligent cameras capture clear, reliable video in any environment
- Turn video into real-time insight at the edge
- Improve security and operations with built-in intelligence

## Detect what matters. Act faster.

- Video analytics identify critical events with purpose-built applications
- Adapt to different use cases with flexible AI licensing
- Enable faster, more informed decisions

## See everything. Stay in control.

- BVMS gives you real-time access to video and insights
- Keep critical information always available and secure
- Support confident decision-making across teams

## Record and access anywhere

- Recording solutions make it easy to manage, store, and access video
- Deploy on-premises or in the cloud
- Ensure continuity with secure, scalable recording

# MEET ANY PROJECT REQUIREMENT

FROM DURABLE, OUTDOOR CAMERAS TO DISCREET INDOOR MODELS

FIXED DOME CAMERAS



BULLET CAMERAS



MOVING CAMERAS



MOVING CAMERAS EXTREME



MULTI-IMAGER CAMERAS



PANORAMIC CAMERAS



THERMAL CAMERAS



SPECIAL CAMERAS



# BROAD PORTFOLIO OF AI-ENABLED, STATE-OF-THE-ART CAMERAS



---

## 3100i Series

Versatile, reliable building security with deep-learning analytics.

---

## 5100i Series

Advanced long-distance perimeter protection, also in extreme conditions.

---

## 7100i Series

Superior accuracy and clear images in low-light or darkness.

---

## 8100i Series

Pushing the boundaries of technology in image quality, edge-based intelligence and ease of installation

# NEW PRODUCTS

## DINION THERMAL 8100i

Available



Long-range thermal detection minimizing false alarms in low visibility

## FLEXIDOME DUAL 7100i

Available



Two imagers in one housing with flexible IVA Pro licensing

## DINION 7100s BOX

Available



Box camera with GenAI at the edge delivers clarity in difficult environments

## FLEXIDOME multi+ 7100i

Q2.2026



Modular multi-imager camera covers complex areas with fewer devices

## MIC FUSION 9100s

Q2.2026



Combines optical and thermal imaging with metadata fusion and GenAI at the edge

## AUTODOME 7100s

Q2.2026



4K PTZ camera with GenAI at the edge and distortion-free imaging

## DINION 7100s FLEXIDOME 8100s

Q3.2026



Dome and bullet cameras with GenAI at the edge for real-time insight

## FLEXIDOME MULTI 7100i

Q3.2026



Four AVF imagers deliver 360° coverage for complete situational awareness

# RECORDING, CLOUD SERVICES, AND MANAGEMENT SOFTWARE



## CLOUD-READY RECORDING SOLUTIONS

- DIVAR IP all-in-one 4000 (32ch. 36TB)
- DIVAR IP all-in-one 6000 (64ch. 72TB)
- DIVAR IP all-in-one 7000 (256ch. 216TB)



## CLOUD SERVICES

- AI Alarm Verification
- VideoView+ for cameras
- Remote Device / System Management



## MANAGEMENT SOFTWARE

- BVMS

# SECURE BY DESIGN

SECURITY IS NOT A FEATURE. IT'S BUILT INTO EVERY STAGE OF THE PRODUCT LIFECYCLE.



## Design & Development

- Built-in security architecture
- Hardware encryption and signed firmware
- Consistent standards across products
- Secure software development and vulnerability testing



## Manufacturing & Supply Chain

- Trusted component sourcing
- Secure production and handling
- Tamper-evident packaging



## Deployment & Installation

- Protected in transit
- Verified integrity on arrival
- Secure configuration from day one



## Lifecycle Management

- Ongoing updates and patching
- Dedicated PSIRT response team
- Long-term vendor support
- Independently certified to global cybersecurity standards

Certified by:



# THE INTELLIGENCE-FIRST PLATFORM

More than a chip. CPP16 extends our platform—integrating imaging, AI, security, and processing for consistent, real-time performance across every camera.

## End-to-end security:

Secure Element 3.0 with FIPS  
140-3 Level 3 protection

## Extended analytics:

Up to 50% longer detection  
range with IVA Pro

## AI imaging:

Sharper detail, true color in  
low light with less noise and  
motion blur

## Advanced encoding:

More streams, lower TCO,  
4K30 + 4K30 + 2MP30  
and Intelligent Streaming

**2X**

Processing power  
Encoding performance

**3X**

NPU performance

# WE ARE LEADING THE WAY TOWARDS VISUAL INTELLIGENCE

## FROM VIDEO-ONLY TO HUMAN-LEVEL SCENE UNDERSTANDING

Ability to understand the scene of different technologies

HUMAN LEVEL  
SCENE UNDERSTANDING



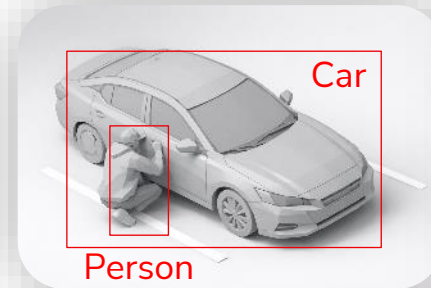
No analytics



Motion analytics



IVA Pro



IVA Pro Context

A person is breaking into the car.



# THE IQSIGHT ANALYTICS ADVANTAGE

WE UNDERSTAND SITUATIONS WITH SPATIAL CONTEXTUAL INTELLIGENCE

## What others see



Line Crossing



Line Crossing

## What we see

 IVA Pro Context

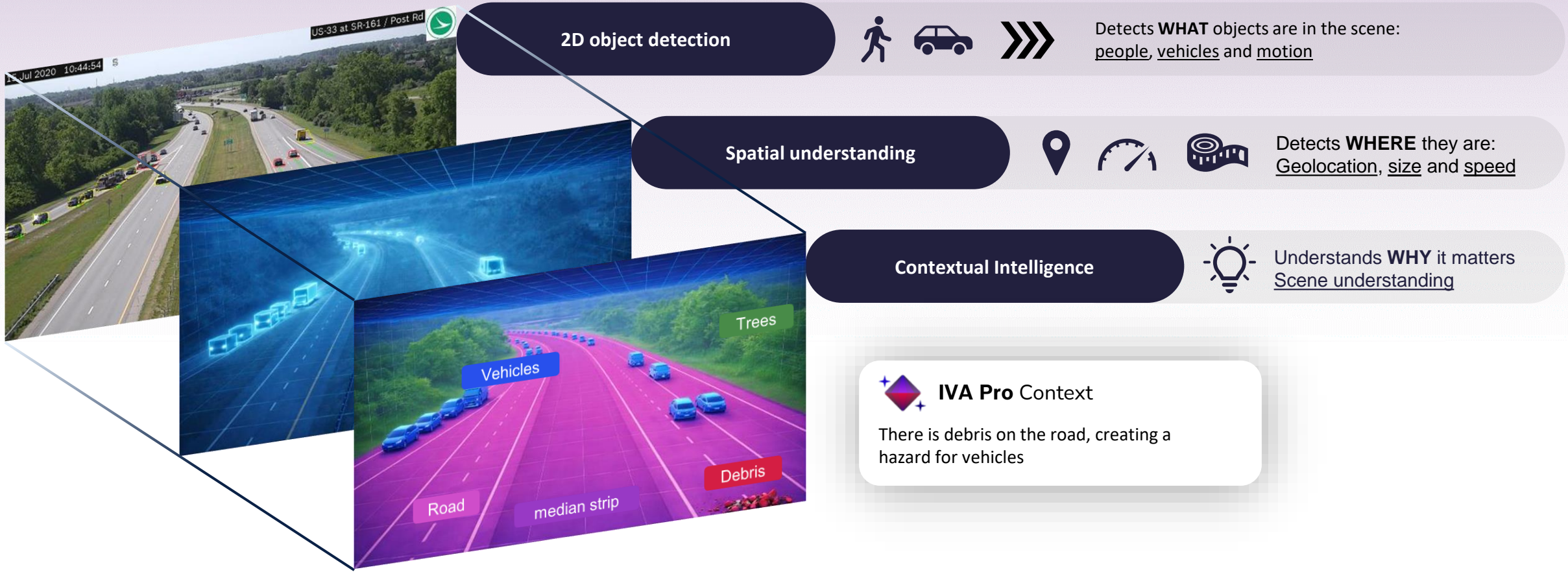
The store entrance appears to be functioning normally, with no visible safety hazards, aggressive behavior, or access control issues observed.

 IVA Pro Context

An individual at the store entrance is openly carrying a large axe while concealing their face. Immediate action should be taken by store security or law enforcement.

# WHAT SETS OUR ANALYTICS APART

WE UNDERSTAND SITUATIONS WITH SPATIAL CONTEXTUAL INTELLIGENCE



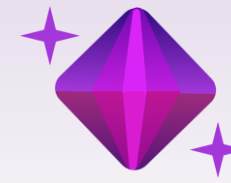
# WE ARE LEADING THE WAY TOWARDS VISUAL INTELLIGENCE

FROM VIDEO-ONLY TO HUMAN-LEVEL SCENE UNDERSTANDING



IVA PRO

Edge



IVA PRO  
CONTEXT

Edge

Q4/26

Cloud

Q2/26

What  
it does



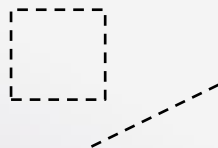
Detects people,  
vehicles and motion



Contextual  
understanding



Geolocation, size  
and speed



Rules  
(e.g. object crossing line)

# HOW CUSTOMERS USE OUR VIDEO INTELLIGENCE

## WE OFFER APPLICATION-SPECIFIC EDGE ANALYTICS

### Government & Education



### Transportation & City Surveillance



### Intelligent Traffic Systems



### Energy / Utilities



Available  
NOW



IVA Pro  
Perimeter

**Use case:** Detect advanced perimeter intrusion attempts, with low false-positives



IVA Pro  
Visual Gun Detection

**Use case:** Designed to detect brandished firearms, to inform operators early in case of an incident



IVA Pro  
Appearance

**Use case:** Find people quickly, with advanced people attributes



IVA Pro  
Intelligent Tracking

**Use case:** Track a person or vehicle automatically with a moving camera.



IVA Pro  
Traffic

**Use Case:** Classify vehicle sub-classes and get additional 3D data (speed, geolocation)



IVA Pro  
Tunnel

**Use case:** All-in-one package fulfilling most requirements of street tunnels



IVA Pro  
PPE

**Use case:** Ensure OSHA compliance with safety vest / helmet detection



IVA Pro  
LPR

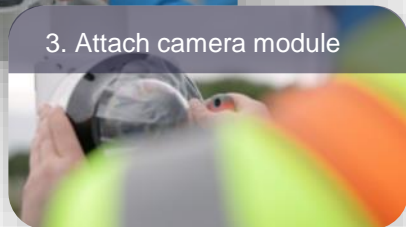
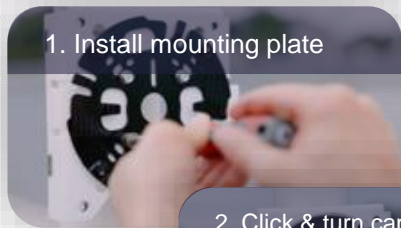
**Use case:** Manage or allow hotlists within the camera to open gates or search for a certain plate

# FLEXIDOME 8100i - THE ULTIMATE FIXED DOME CAMERA

## SIMPLE CAMERA SETUP WITH USER-CENTERED DESIGN

### Three-step installation

- Easy and reliable with **enclosed camera module**



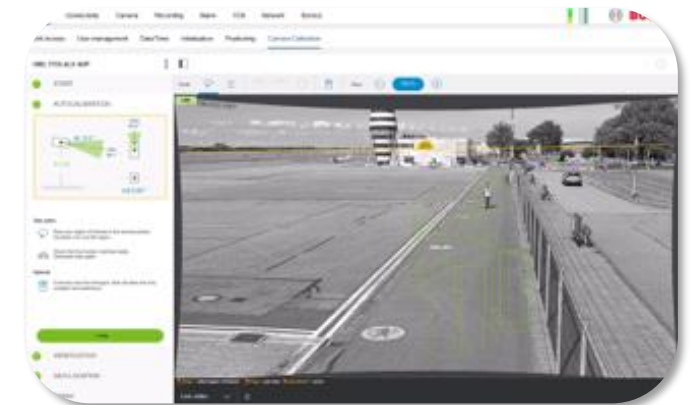
### Remote commissioning

- Change the field of view and commission the camera **remotely**
- **Save travel time and costs**
- **Reduce total cost of ownership and carbon footprint**



### AI 3D Autocalibration

- **No calibration** required for video analytics with IVA Pro Buildings
- AI-based Autocalibration for **complex applications** requiring accurate insights
- **Prevents human errors**, ensures **highest reliability** and **significantly reduces setup time**

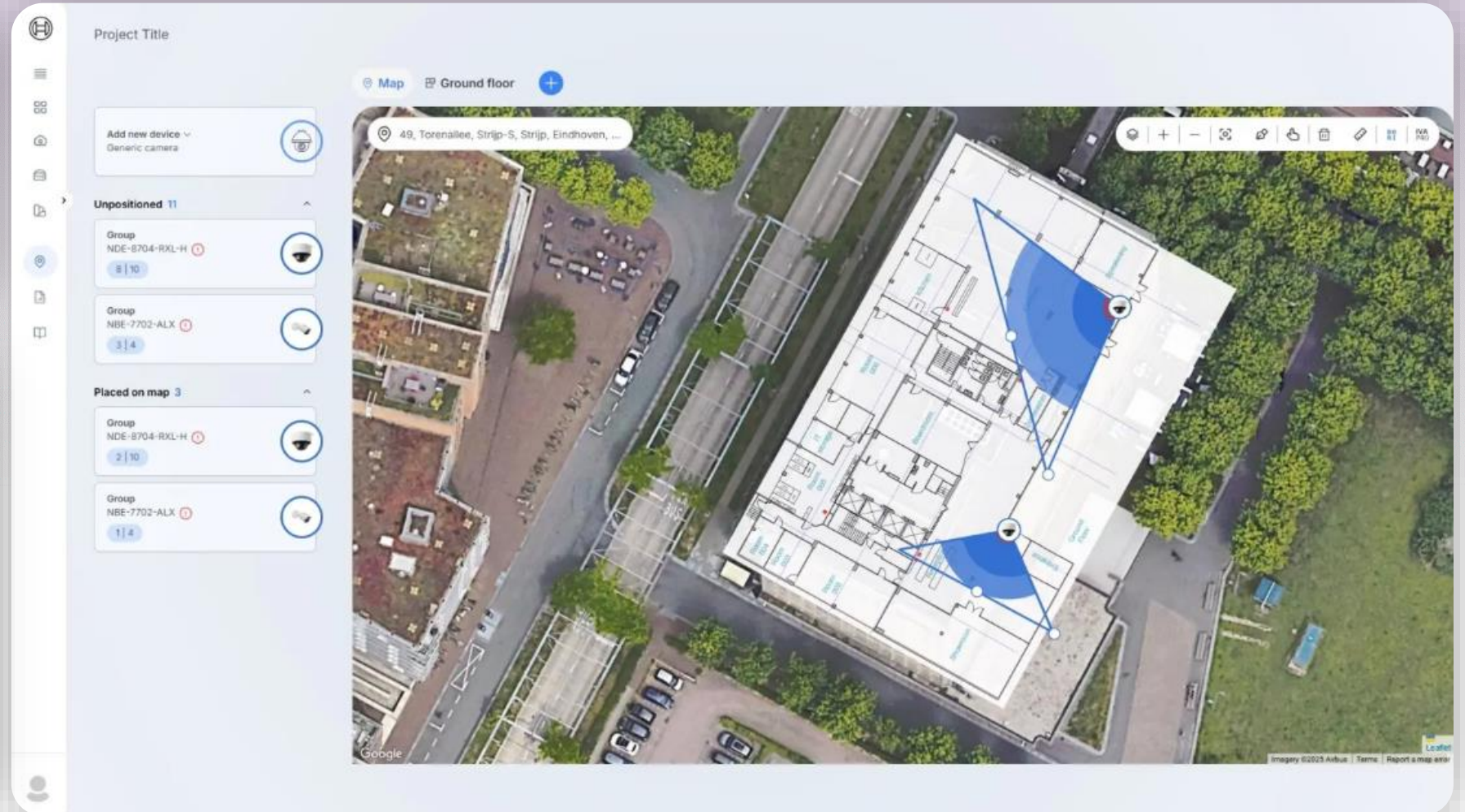


# HOW WE SUPPORT OUR CUSTOMERS

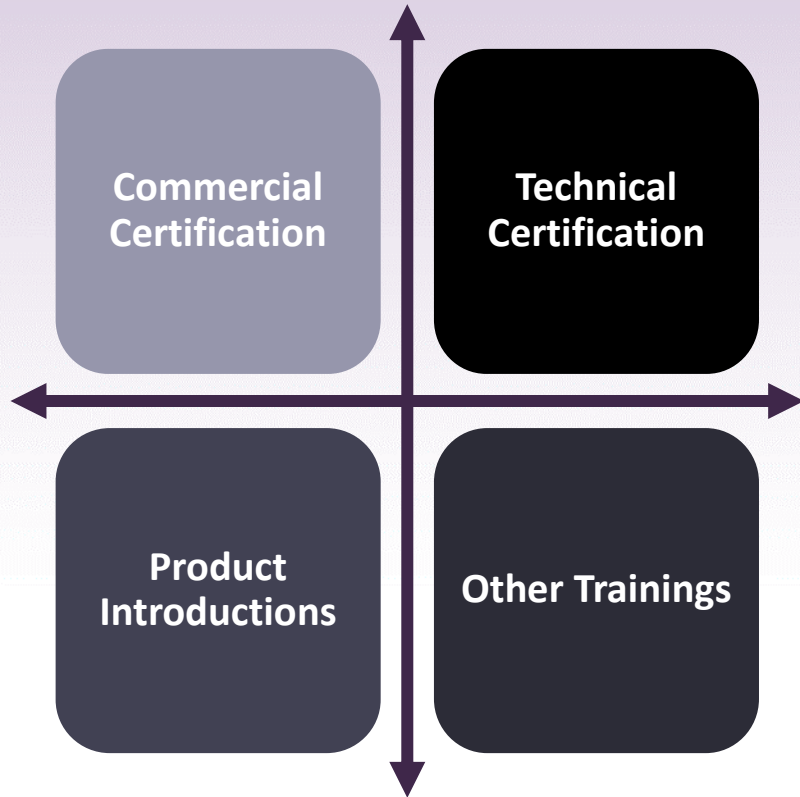
DESIGNHUB – MAP AND REQUEST THE RIGHT PRODUCTS TO YOUR SPECIFIC PROJECTS



- Find the perfect camera fit
- Compare cameras side-by-side
- Select the right accessories for your project
- Precise calculation of needed storage capacity
- Map cameras on Google Maps and check field of view
- Show DORI values
- Determine correct detection distance with visual precision
- All IVA Pro applications are supported
- Create complex, multi-floor system designs
- Design perimeter security to interior monitoring
- Provides specifications and documentation
- Request a quote



# TRAINING



Easier now to become certified via online paths.  
Our Academy offers a myriad of **Web Based Trainings 24/7**.



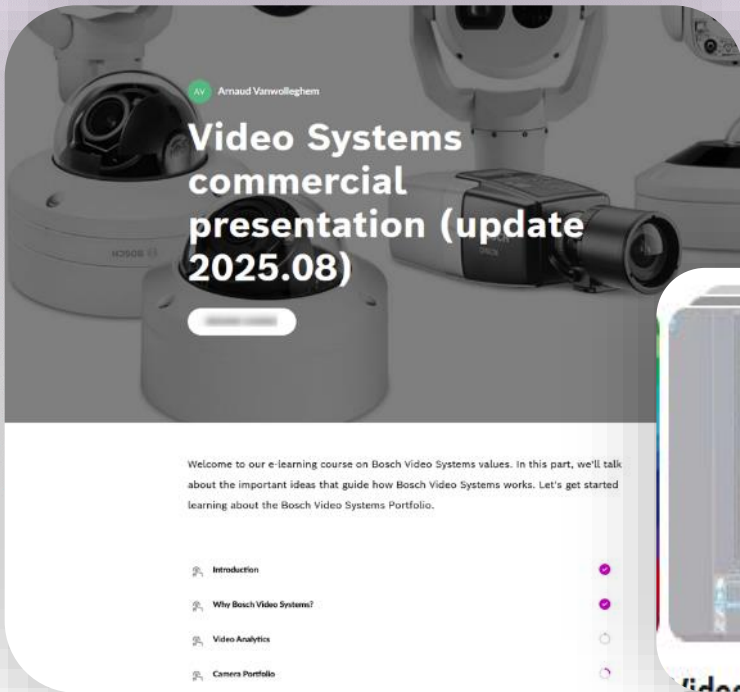
**Virtual or In-Person Classroom trainings** are offered by **local trainers** in your **native language** (where possible) at **very affordable rates**.



Trained and certified employees **receive quicker response for technical support** and help their **companies qualify for additional project discounts**.

# TRAINING

## CUSTOM LEARNING PATH



Online training introducing our camera and Video Analytics portfolio

### How To Videos



How to videos explaining how to configure our cameras and our video analytics in a third-party system

### Channel partner classroom training

#### What to Expect:

- **When:** 3-day event, Oct. 14-16, 2025
- **Where:**
- **Who:** Genetec and Bosch channel partners.
- **Fees:** this exclusive training is offered at no cost to partners

#### Obtain two industry-recognized certifications:

- Genetec Omnicast SC-OTC-001 Video Certification
- Bosch Video Analytics Configuration Certification

#### Hands-on topics and labs:

- Installing and fine-tuning Genetec Security Center – SaaS
- Interfacing with Bosch cameras and creating IVA rules using the new Ease of Configuration plugin
- Creating user schedules, dashboards, and automation rules
- Enhancing video resolution, recording modes, and features for locating evidence
- Implementing Bosch weapon detection and event trigger workflows
- Applying best maintenance practices and troubleshooting complicated scenarios

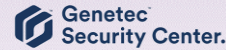
Hands-on classroom training (on demand): demonstrate the easy configuration and capability of our analytics.  
Students acquire a certificate (valid for partner program and tech support access)

# INTELLIGENT PARTNER ECOSYSTEM

INTEGRATED VIDEO ANALYTICS THAT REDUCE COMPLEXITY, STREAMLINE OPERATIONS, AND MAXIMIZE EXISTING INVESTMENTS



- Native integration. Full control of cameras and analytics within Security Center
- Plug-in Suite. Advanced functionality without additional hardware or software
- Unified experience. Single installer and centralized configuration interface
- Operational efficiency. Reduce tools, save time, and simplify workflows



## Integration Depth

Native camera and analytics integration

## Analytics

Attribute and Similarity Search via Plug-in

## End 2 End Security

With password rotation & certificate management

## Configuration via Plug-in

IVA & advanced camera configuration inside Genetec



## Connectivity

Direct-to-Cloud integration

## Analytics – Realtime

IVA Events integrated

## Analytics - Forensics

IVA Pro Attributes

## Storage

SD-card support for backup storage (planned)

Supporting smart cities, transportation, and critical infrastructure environments

Also compatible with ONVIF-based systems

# INTELLIGENT PARTNER ECOSYSTEM

Consolidated integration that simplifies deployment, surfaces rich analytics, and accelerates security operations

- SmartSuite integration. Consolidates all Bosch camera capabilities into a single installer
- Faster deployment. Reduce installation time by up to 70%
- Advanced analytics visibility. Surface rich metadata and AI-driven insights directly in XProtect
- Simplified configuration. Configure devices and analytics within a single interface



Enabling faster investigations, real-time awareness, and more efficient operations

Also compatible with ONVIF-based systems



THANK YOU

**IQSIGHT**

VISUAL INTELLIGENCE FOR A WORLD UNINTERRUPTED

